

RIDE ON!

CLUB  2025

SEA-DOO Can-am ALUMACraft MANITOUL



can-am®



AGENDA

- CAN-AM CANYON

- CAN-AM SPYDER/RYSKER

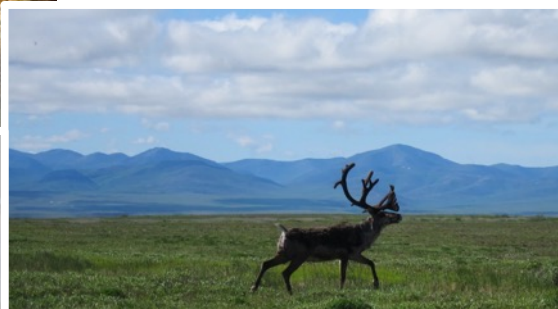
can-am[®] CANYON



CLUB  2025

can-am

THE ROAD LESS TRAVELED



KEY MESSAGES

The Road Less Traveled

Can-Am Canyon's is built to be both **capable** and **comfortable** for the road less traveled.

Democratize All Roads

We have a unique opportunity to make adventure riding **more accessible** with our competitive advantage

Adaptable and Inspiring

Change your **configuration** easily based on the journey ahead



KEY PILLARS



CAPABLE & DURABLE

Capable to bring you on any type of roads with confidence and design to last.



COMFORT

Comfortable position and features to always seek for longer adventures.



STORAGE & CONVENIENCE

Lots of storage options and convenient functionalities for any adventure.

CAN-AM 3W MODEL IDENTITY

The unique identities help connect people with the right product experience

can-am
SPYDER RT



can-am
SPYDER F3



can-am
RYKER



can-am
CANYON



TOURING



CRUISER



RECREATIONAL



ADVENTURE

CLUB  2025

CAN-AM CANYON LINE-UP

CANYON



CANYON *XT*



CANYON *REDROCK*



SHARED FEATURES

CAN-AM SPYDER & CANYON

MAIN COMMON FEATURES

ROTAX 1330 ACE ENGINE

BREMBO BRAKES

CRUISE CONTROL

10.25" TOUCHSCREEN DISPLAY

SEMI-AUTOMATIC TRANSMISSION

LED HEADLIGHTS

...



can-am
SPYDER

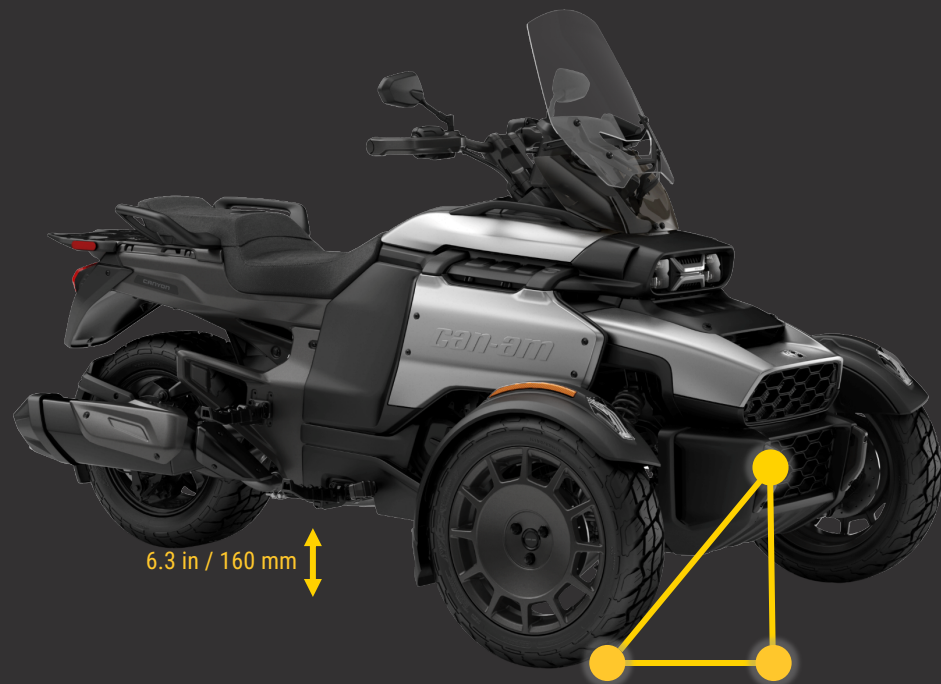
can-am
CANYON

CLUB  2025

THE ROAD LESS TRAVELED

CAN-AM CANYON

KEY FEATURES: CAPABLE



HIGH GROUND CLEARANCE

6.3 in / 160 mm
Overcome obstacle



HIGH APPROACH ANGLE

Overcome bumps and uneven roads.



THE ROAD LESS TRAVELED

CAN-AM CANYON

KEY FEATURES: CAPABLE



ADVENTURE TIRES

XPS Adventure
Grip and comfort



HIGH SUSPENSION TRAVEL

10.2 in / 260 mm (front)
9.2 in / 235 mm (rear)



THE ROAD LESS TRAVELED

CAN-AM CANYON

KEY FEATURES: DURABLE



METAL RADIATOR GRILLE

Protect the radiator from rocks and other debris



BELT PROTECTOR

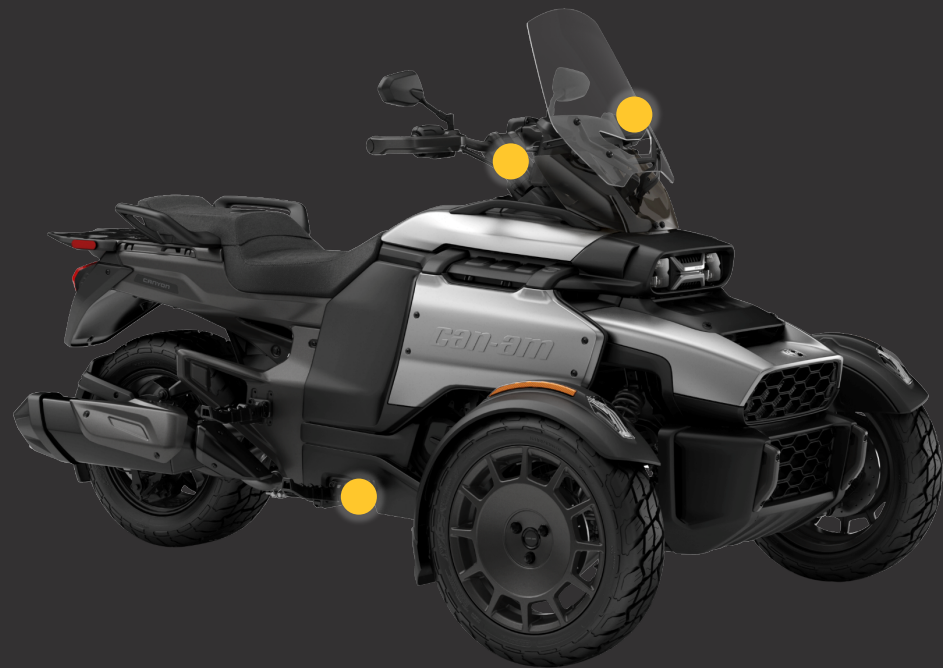
Protect the belt from rocks and other debris



THE ROAD LESS TRAVELED

CAN-AM CANYON

KEY FEATURES: COMFORTABLE



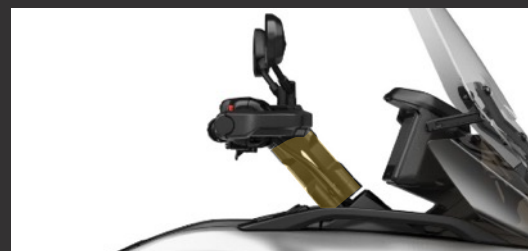
ADJUSTABLE WINDSHIELD

Manual adjustment



HANDLEBAR RISER

5.6 in / 143 mm



ENDURO ANTI-SLIP PEG

Superior Grip



THE ROAD LESS TRAVELED

CAN-AM CANYON

KEY FEATURES: STORAGE



GLOVE BOX

0.16 gal/0.6 L with
USB port



LINQ SYSTEM

21 LinQ attachment
points



THE ROAD LESS TRAVELED

CAN-AM CANYON

KEY FEATURES: CONVENIENCE



10.25" DISPLAY

Touchscreen display
with Apple CarPlay



HANDGUARDS

Protect from
oncoming debris



DRIVE MODES

All-Road, Sport, Rally &
Normal



CAN-AM CANYON

KEY FEATURES



CAN-AM CANYON XT

ADDITIONAL KEY FEATURES

CLUB  2025

THE ROAD LESS TRAVELED

CAN-AM CANYON XT

ADDITIONAL KEY FEATURES



DURABLE

Skid Plate

Front Skid plate under the Can-Am Canyon



THE ROAD LESS TRAVELED

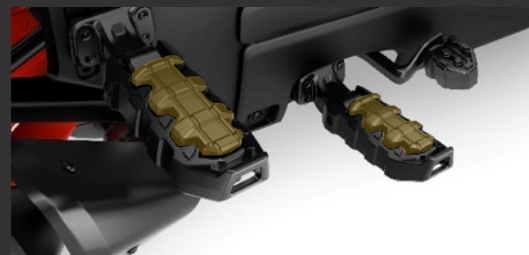
CAN-AM CANYON XT

ADDITIONAL KEY FEATURES: COMFORT



COMFORT PEGS

REMOVABLE PADS



SELF-LEVELING SUSPENSION

SELF-LEVELING AIR
PRELOAD ADJUSTMENT



COMFORT SEAT & PASSENGER BACKREST

THICKER FOAM



THE ROAD LESS TRAVELED

CAN-AM CANYON XT

ADDITIONAL KEY FEATURES



STORAGE

Aluminum cases

Removable top and side cases (31.7 gal / 120 L)



THE ROAD LESS TRAVELED

CAN-AM CANYON XT

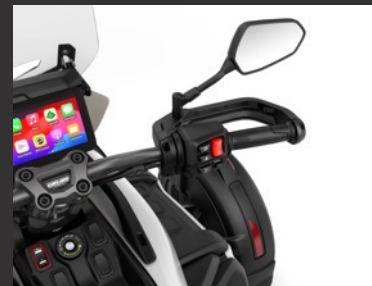
ADDITIONAL KEY FEATURES



CONVENIENCE

Heated Grip

Driver and passenger



CAN-AM CANYON & XT

KEY FEATURES



CAN-AM CANYON REDROCK

ADDITIONAL KEY FEATURES

THE ROAD LESS TRAVELED

CAN-AM CANYON REDROCK

ADDITIONAL KEY FEATURES



COMFORT

KYB Smart-Shox

Semi-active suspension



THE ROAD LESS TRAVELED

CAN-AM CANYON REDROCK

ADDITIONAL KEY FEATURES



STORAGE

Premium Aluminium cases

Premium coloration



THE ROAD LESS TRAVELED

CAN-AM CANYON REDROCK

ADDITIONAL KEY FEATURES



CONVENIENCE

Back-up Camera



Custom Drive Mode

Adjust : Engine, TCS/ABS,
Power Steering and
Suspension



CAN-AM CANYON RECAP

CANYON



Ready to Customize

- Perfect for solo rider
- Blank canvas ready to accessorize (LinQ integration)
- Perfect for new entrants in the adventure segment



CANYON *XT*



Adventure Ready

- Adventure ready with added comfort features and storage
- Improved rear suspension
- 2-up features



CANYON *REDROCK*



Peak Adventure Thrills

- Top of the line Adventure 3WV
- Premium coloration and trims
- Semi-active suspension : KYB Smart-Shox
- Back-up Camera



DEMOCRATIZE ALL ROADS: COMPETITIVE ADVANTAGE

Accessibility

Adventure Motorcycle

- Technical sport
- Require advanced skill

Can-Am Canyon

- Impressive stability
- Accessible for new entrants



ADAPTABLE AND INSPIRING: COMPETITIVE ADVANTAGE

Storage

Adventure Motorcycle

- Restricted in storage options
- Required equal weight distribution
- Affect the stability
- Limited configuration

Can-Am Canyon

- Lots of space for storage option
- Less affect by weight distribution
- Impressive stability
- LinQ integration



ADAPTABLE AND INSPIRING: COMPETITIVE ADVANTAGE

LINQ INTEGRATION

EASY, VERSATILE AND ROBUST ACCESORIZATION



ADAPTABLE

LinQ System

21 attachments points



LinQ Plate

Metal plate for robust accessorization



CAN-AM CANYON ACCESSORIES



CAN-AM **CANYON** ACCESSORIES STRATEGY

Extensive portfolio at launch

- 25 Canyon-specific accessories at launch and many existing LinQ products available

The first 3WV to be fully LinQ-ready from the factory

- LinQ 16" (2x)
- Introducing **LinQ Nano**
- LinQ Lite action camera holder to share your adventures
- LinQ 36" capabilities with accessory **LinQ 36" Adventure Plate**

High Accessorization Potential

- Adventure vehicles provide the largest opportunities for accessorization in the motorcycle industry
- Multiple categories can be addressed such as protection, cargo, comfort, durability, etc.

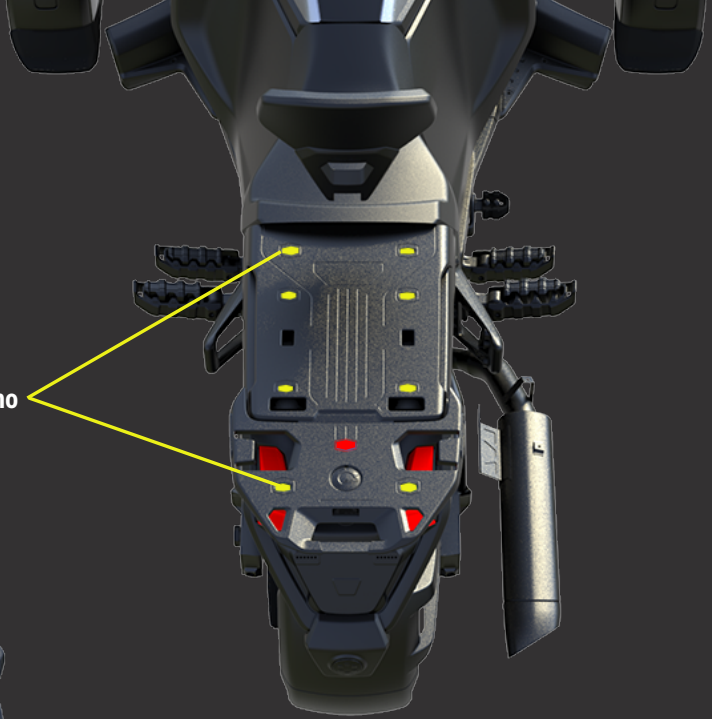
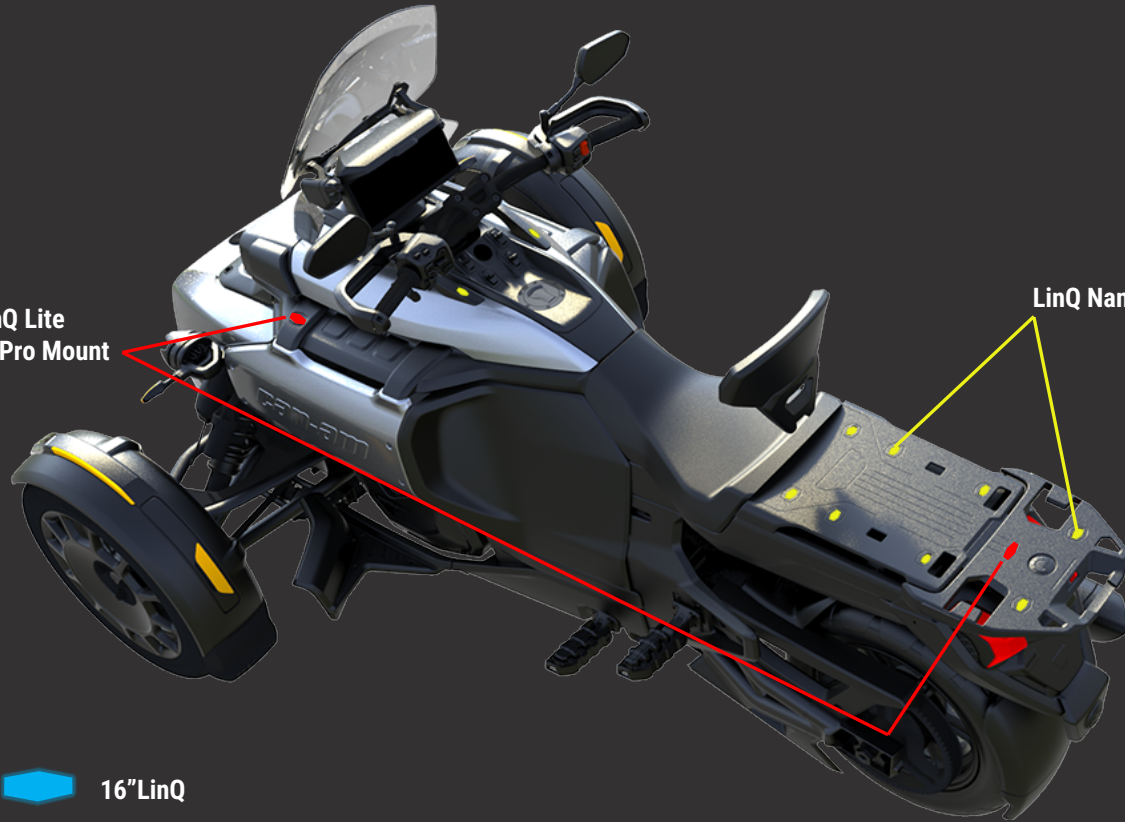


CAN-AM CANYON LINQ INTEGRATION

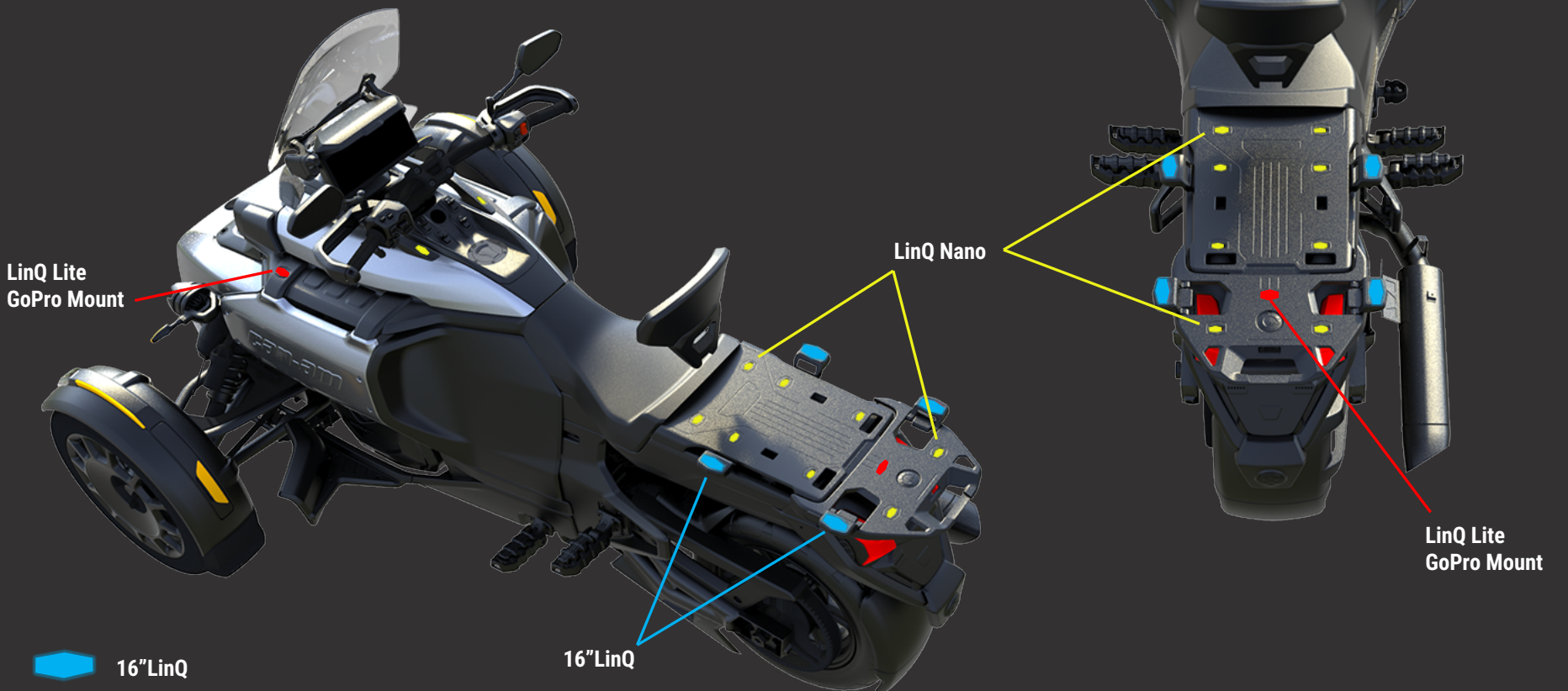
LinQ Lite
GoPro Mount

LinQ Nano

-  16" LinQ
-  LinQ Nano
-  LinQ Lite



CAN-AM CANYON LINQ INTEGRATION



LinQ Lite
GoPro Mount

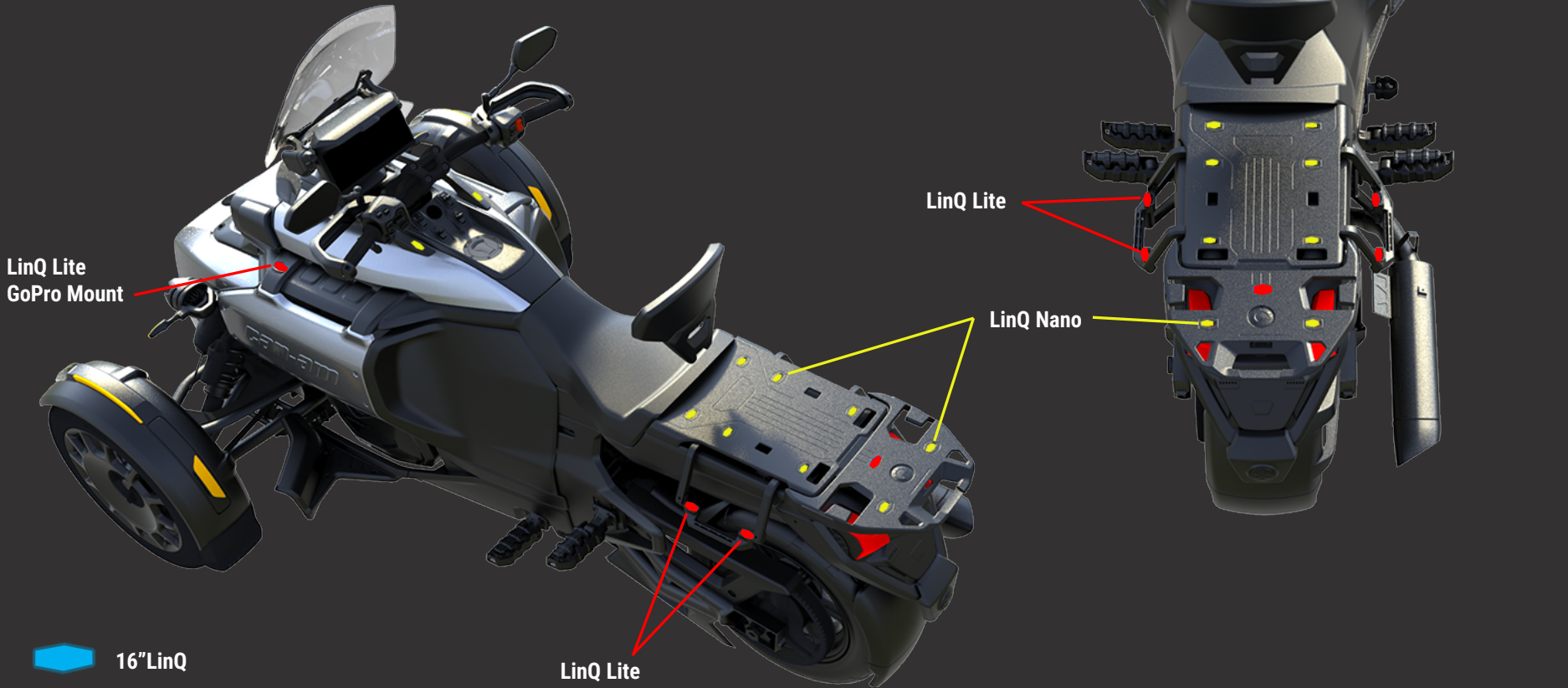
LinQ Nano

16" LinQ

LinQ Lite
GoPro Mount

-  16" LinQ
-  LinQ Nano
-  LinQ Lite

CAN-AM CANYON LINQ INTEGRATION



LinQ Lite
GoPro Mount

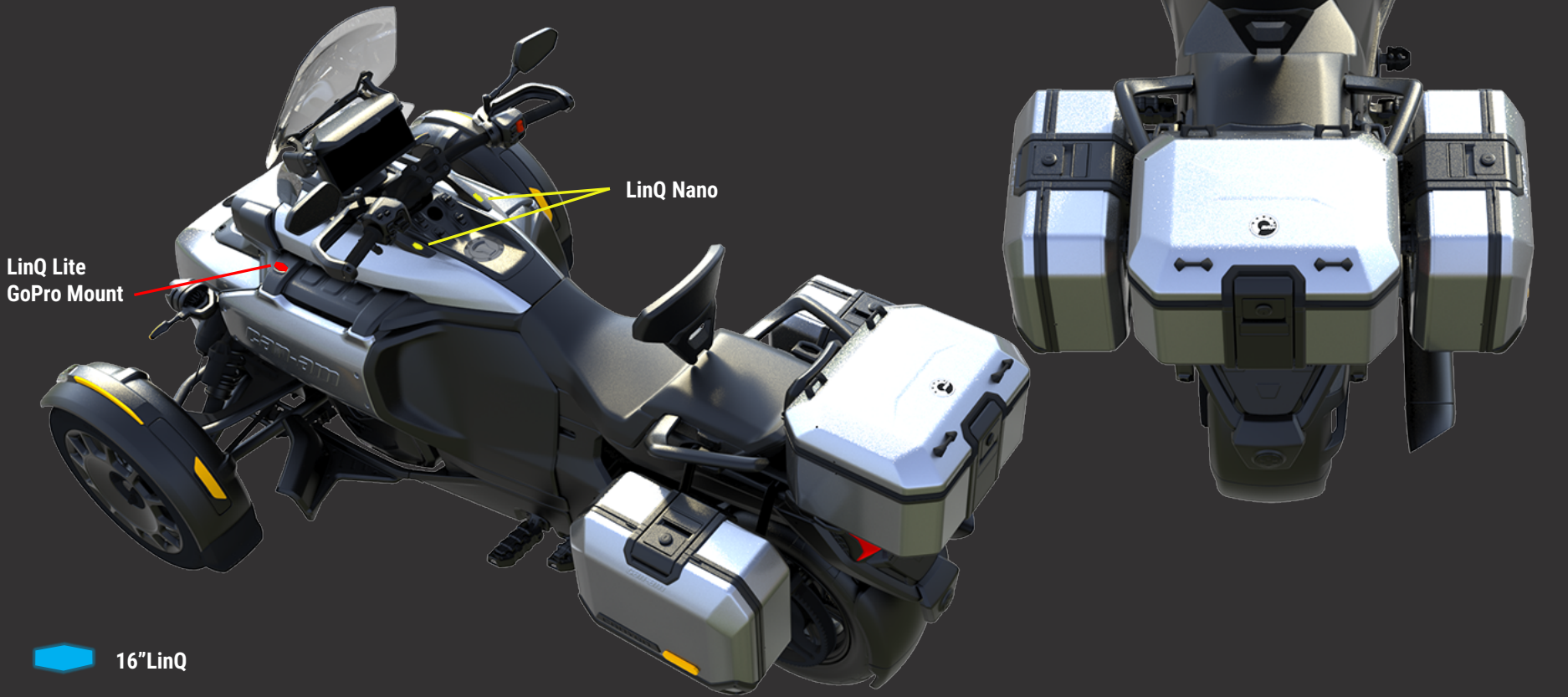
LinQ Lite

LinQ Nano

LinQ Lite


-  16" LinQ
-  LinQ Nano
-  LinQ Lite

CAN-AM CANYON LINQ INTEGRATION



LinQ Lite
GoPro Mount

LinQ Nano

-  16" LinQ
-  LinQ Nano
-  LinQ Lite



CAN-AM CANYON ACCESSORIES PILLARS

25 Canyon-specific accessories at introduction

DURABLE & CAPABLE



STORAGE



CONVENIENCE



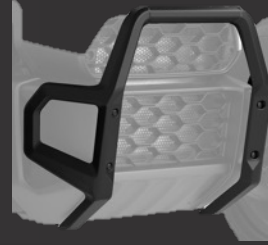
COMFORT



DURABLE & CAPABLE

Adventure Front Bumper

- Thick cast-aluminum tube construction with black powder coat
- Compatible with the LED Fog Lights producing 800 lumens each (LED Fog Lights not available in Europe)



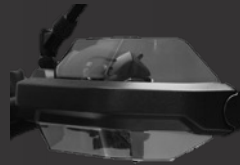
Headlight Protector

- Robust, impact-resistant polymer construction with steel grilles for improved protection
- Hidden hardware for a clean and sleek look
- Unmistakable adventure look



Handguard Deflectors

- Easily bolts onto the stock handguards for extra protection against the wind, rain and small debris
- Made of robust, smoked 3 mm polycarbonate.



STORAGE *Rear Section*

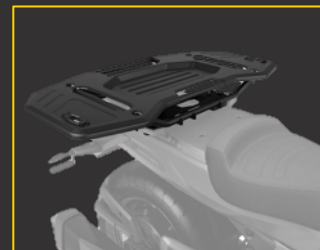
16-inch accessories (stackable *)

- Modular Box 10L, 20L and 30L
- LinQ 4.2 Gal (16L) Cooler
- LinQ Sport Bag
- LinQ Fuel Caddy (4 gallons)
- LinQ Tool Kit
- LinQ Lock



36-inch accessories

- LinQ 36-inch Adventure Plate
- LinQ Low-profile box (63L)
- Soft Storage Bag (70L)



* When specified, and according to LinQ stackability guidelines and warning labels

STORAGE *Front Section*

LinQ Nano Tank Bag

- Installed on the vehicle's LinQ anchors
- Weatherproof, easy-to-access storage compartment for your wallet, keys, sunglasses, etc.
- Pivots out of the way to allow for easy re-fueling



Inner Bag

- Perfectly fits the inside of the Canyon Aluminum Top Case and Side Cases
- Easily taken out of the cases and carried inside with a shoulder strap
- Features a zipper extension, storage pockets, high-quality zippers, etc.



CONVENIENCE

Covers

- Made of durable, 100% waterproof, fully-breathable 100-denier polyester with PU coating

Outdoor Cover

- Can be used for trailering
- Protection against friction in key areas



Travel Cover

- Compact size makes it convenient for traveling



LinQ Lite Camera Holder

- Offers 360-angle positioning for perfect filming and taking photos
- Fast, easy attachment and removal



COMFORT

Sport Windshield

- Hardcoated clear polycarbonate for unrivaled durability
- Relieves wind pressure to the chest area
- **Smaller** than stock for more better airflow and better visibility on technical terrain



High Windshield

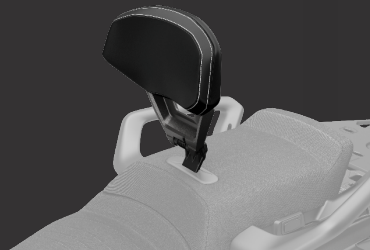
- Hardcoated clear polycarbonate for unrivaled durability
- Provides protection up to the helmet level
- **Larger** than stock for increased wind protection & turbulence at higher speed



COMFORT

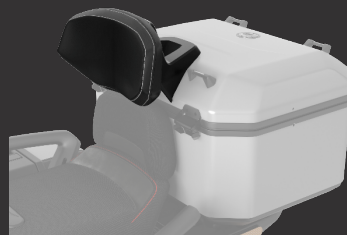
Driver Backrest

- Sturdy aluminum base with angle adjustments
- Soft, comfortable vinyl padding
- Folds forward for easy passenger seat access



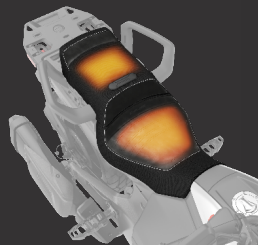
Passenger Backrest

- Bolts into Aluminum Top Case (standard on XT and Redrock)
- Helps passenger maintain healthy, ergonomic posture



Heated Premium Seat

- Cut and Sew construction for optimal fit & finish and high-end look
- Dual range Hi/Low heat setting
- More generous padding than stock seat (Standard and XT)



ACCESSORIES FROM XT AND REDROCK

Aluminum Top Case

- Bare aluminum finish
- No brackets or rack to purchase



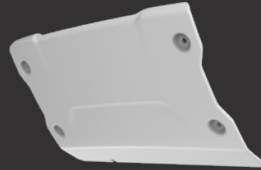
Aluminum Side Cases

- Bare aluminum finish
- No brackets or rack to purchase



Skid Plate

- Protects the front area of the undercarriage on challenging terrain



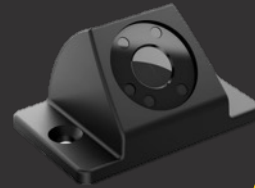
Heated Grips

- 5 intensity settings



Backup Camera Kit

- Compatible on Standard and XT
- Easy installation: the vehicles are already pre-wired



can-am
SPYDER



CLUB  2025

KEY MESSAGES

Improved tire quality

New *XPS* tires on all CAN-AM 3W vehicles

New technology

New back-up camera on select models and as an accessory

Coloration

New modern colorations on key models



IMPROVED TIRE QUALITY

can-am
SPYDER RT

| XPS ROADSTER

can-am
SPYDER F3

| XPS ROADSTER

can-am
CANYON

| XPS ADVENTURE

can-am
RYKER

| XPS RIDE | XPS RALLY



XPS ROADSTER tires have seen a significant improvement when compared with the previous version. Now with up 2x more durability without compromising on grip and comfort.

NEW TECHNOLOGY

Backup camera



RT Sea-to-Sky



F3 Limited Special Series



Canyon RedRock

Standard on Special Series MY25

- Automatically appear when in reverse
- Static lines on screen
- Available as an accessory : vehicles with the 10,25 in Touchscreen display (MY25) *

*Except F3-S



IMPROVED COLOR FINISH

SPYDER RT AND F3

COLOR-IN TO PAINTED PARTS



can-am

SPYDER RT

RT Limited

Rear speaker trim
Mirror trim



can-am

SPYDER F3

F3-S / F3-T / F3 Limited

Rear speaker trim | Scoop
Mirror shell | Front fender
Access panel

CLUB  2025

MINERAL BLUE

DARK PARTS AND TRIMS

* REPLACE PETROL METALLIC (MY24)



Available on:

- F3 LIMITED

- RT LIMITED

CLUB  2025

DUSK METALLIC

MOKA PARTS AND TRIMS



DUSK METALLIC



RT SEA-TO-SKY

CLUB  2025

BRITISH GREEN METALLIC

CARBON BLACK PARTS AND TRIMS



F3 LIMITED SPECIAL SERIES



CLUB  2025

NEW COLORATION – MY25 EMEA Can-Am Spyder Line-up

RT LTD
DARK

SEA-TO-SKY

F3 S

F3 T

F3 LTD
DARK

SPECIAL SERIES



HYPER SILVER METALLIC



PEARL WHITE



CARBON BLACK



MONOLITH BLACK SATIN



MINERAL BLUE SATIN



DUSK METALLIC



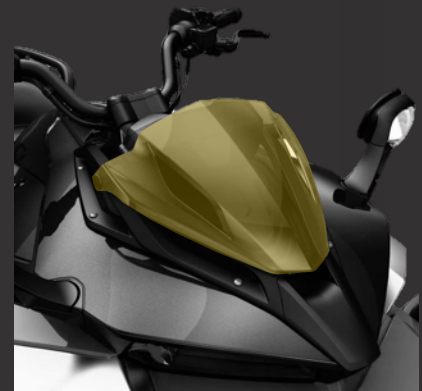
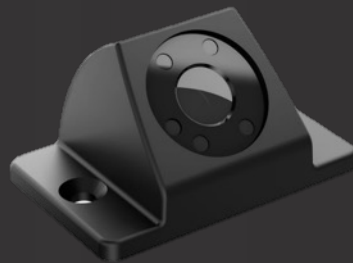
MINERAL BLUE SATIN



BRITISH GREEN METALLIC

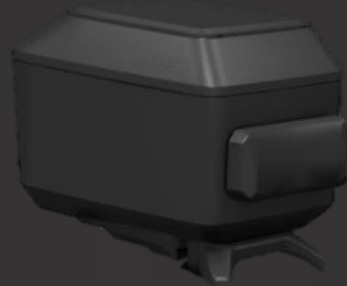
LINE-UP ACCESSORIES

- Heated grips are back on F3 for MY24+ under a new SKU
- Gauge spoiler is back on F3-S MY24+ under a new SKU
- Back-up camera (standard on RT Sea-to-Sky and F3 LTD Special Series) is now sold as an accessory takeover for MY25+



New LinQ Top Case (36L) available for Ryker (MY19+)

- More than twice the capacity of the current semi-rigid LinQ Top Case (16L)
- Hard, durable polymer construction
- No need for a LinQ Plate: clips directly on the MAX Mount
- Fits any full-face helmet
- Comes with a small backrest for improved comfort



4 NEW EXCLUSIVE COLOR PANELS FOR RYKER

Atlantis Gold



Urban Blue



Cyber Orange



Moka Plaid



OUR TOP PRIORITIES

*The main 2W / 3W APPAREL
product news for the season*

1

PROTECTIVE EQUIPMENT
ADVEX, COMM

2

NEW TNT/2W
CAPSULE

3

NEW & RPT
SPORTSWEAR

LINE-UP OPTIMIZATION

HELMETS

50%

RIDING GEAR

4%

SPORTSWEAR

36%

TOTAL WW SKU's REDUCED BY

~30%

OBJECTIVE:

Allows us to focus on increasing SKU productivity!

Volume per style

REPRICED Advex Helmets!

929106 ADVEX JET
DOT/ECE

€ 469.00 MRSP (-16%)

929107 ADVEX
DOT/ECE

€ 589.00 MRSP (-16%)

KEY FEATURES & BENEFITS

- M-FORGED composite shell
- Modular construction
- Large field of view
- Pin lock 120 included
- Lightweight (1675 gr/3.69 lbs)
- 2 shell, 4 EPS size
- Retractable anti-scratch Smoke tint sun visor
- Adjustable ventilation
- Aerodynamic ADJUSTABLE peak visor
- Micrometric ratchet fastener
- DOT/ECE certification
- VIBE COM SYSTEM compatibility
- UTILITY LED COMPATIBILITY
- Optional Peak 9291180090 (\$15/\$20)

PRODUCT INFORMATION



**OPEN MESH
INTERCOM:
LIMITLESS**



BLUETOOTH 5.1



**GROUP MESH
INTERCOM:
20 RIDERS**



**INTERCOM
1.6 KM / 1 MI**



**MULTI-LANGUAGE
VOICE COMMAND**



**ADVANCED NOISE
CONTROL™**

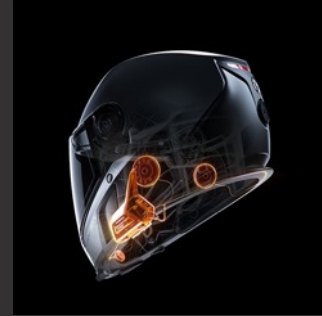
**RAPID CHARGING BATTERY LIFE 8 HR
@ -18°C/0°F, UP TO 12 HR IN SUMMER
CONDITIONS.**

ONE-CLICK-TO-CONNECT

UNIVERSAL FIT



SOUND BY
harman / kardon



WHAT'S NEW

456030 MEN'S METROPOLIS AESIR JACKET

Waterproof CE Class A commuter jacket



ADAPTS TO WIND & WEATHER

Protect yourself from wind and water. The schoeller®-c_change™ membrane reacts to changing temperatures and activities and ensures an optimal body climate in every situation.



DYNAMIC
CLIMATE
CONTROL

WIND
PROTECTION

BREATHABLE

WATERPROOF

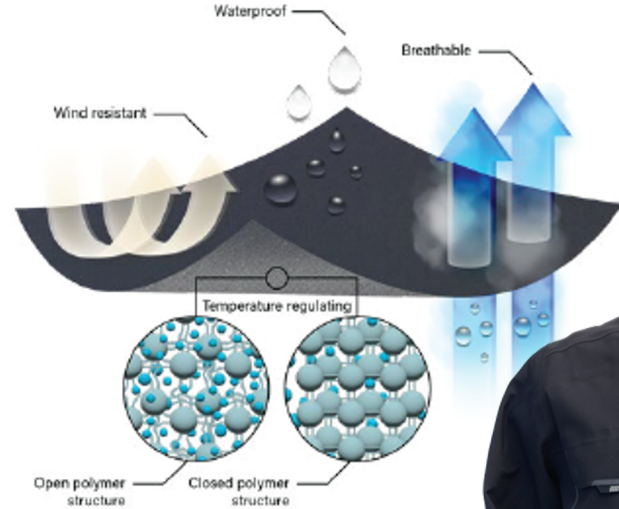


- CLASS A CERTIFIED
- LAMINATED NYLON AND POLYURETHANE SCHOELLER FABRIC WITH POLYESTER **C_CHANGE MEMBRANE**
- 10K WATERPROOF /6K / PFAS-FREE DWR FINISH
- SAS-TEC ERGONOMIC ARMOR ADJUSTABLE AT ELBOW AND SHOULDER, BACK OPTIONAL
- MAGNETIC CLOSURE AT FRONT FLAP AND POCKET
- INNER CELL PHONE POCKET AND INNER CUFF
- BLACK REFLECTIVE DETAILS
- FULLY SEALED SEAMS

AESIR JACKET // BRP x Schoeller “C-Change” membrane

FUNCTION

- schoeller®-c_change™ membrane acts in a similar way to pine cones which open and close in response to different weather conditions
- at higher temperatures or during aerobic activities, the polymer structure of the schoeller-c_change™ membrane opens in response to the correspondingly intense moisture development
- excess heat and moisture can escape to the outside air
- in the cold or at times of low activity, the membrane remains closed
- as a result of lower moisture development, the polymer structure contracts and keeps the heat close to the body
- can be processed into membrane solutions ranging from non-elastic to highly-elastic



WHAT'S NEW

441715 MEN'S METROPOLIS AESIR PANTS

E Class A commuter pants

LIGHTWEIGHT
STRETCH NYLON
AND SPANDEX

8K WATERPROOF/
3K / PFAS-FREE DWR
FINISH

ARAMID LINING AT
KNEE AND HIPS

SAS-TEC
ERGONOMIC ARMOR
AT KNEE WITH
ADJUSTABLE
POSITION, HIPS
OPTIONAL



VENTING POCKET AT
BACK WITH MESH
LINING

BACK POCKET WITH
MAGNETIC CLOSURE

REFLECTIVE BLACK
DETAILS AT BACK
KNEES

ELASTIC PANEL WITH
BLACK REFLECTIVE
TAPE AT BACK OF LEG
OPENING

HAND POCKET
W/ ZIPPER CLOSURE



METROPOLIS AESIR PANTS

What is the difference between Aramid and Kevlar?

It is the **SAME** thing! Kevlar is simply a trademark brand name for the generic aramid fiber made by DuPont.

Due to the amount of strength these high performance and resilient 100% synthetic fibers have, they can withstand even the most harsh elements and provide extra needed protection:

- **Lightweight** (lighter than carbon fiber)
- **Heat-resistant & Flame resistant** (high melting point)
- **Anti-abrasion**
- **Impact resistant** (absorbs energy)

Over half of 2W riders ride unprotected, putting themselves at risk should they get into an accident. Focus on educating dealers and customers to our offering of certified protective gear to make the right choice to keeping them safe!



WHAT'S NEW

454926 MEN'S METROPOLIS LOKI RIDING HOODIE

Wind & Water Resistant CE Class A Certified Riding Hoodie



ABRASION
RESISTANT FABRIC
AND SAS-TEC
ERGONOMIC ARMOR
AT ELBOWS AND
SHOULDERS

LAMINATED SOFT SHELL
FABRIC WITH TPU
MEMBRANE AND MICRO-
FLEECE BACK

8K WATERPROOF/3K /
PFAS-FREE DWR FINISH



ADJUSTABLE, SNAP-
DOWN HOOD

BLACK REFLECTIVE
DETAILS AT ELBOW
AND BACK

SAS-TEC BACK ARMOR
(OPTIONAL)

WHAT'S NEW

288034 WOMEN'S METROPOLIS LOKI RIDING HOODIE

Water Resistant CE Class A riding hoodie



WHAT'S NEW

454926 MEN'S METROPOLIS LEATHER GLOVES

CE Level 1 gloves



- TOP GRAIN GOATSKIN LEATHER
- PADDED KNUCKLES, PALM & THUMB
- CUSTOM HARD-SHELL KNUCKLE
- STRETCH PANELS AT FINGERS
- ULTRA SHORT WRIST CUFF
- RECYCLED TRICOT LINER
- PERFORATED HOLES ON FINGERS & FOURCHETTES
- EN 13594: 2015 // LEVEL 1 + KNUCKLE

WHAT'S NEW

288044 WOMEN'S METROPOLIS LEATHER GLOVES

CE Level 1 gloves



- TOP GRAIN GOATSKIN LEATHER
- PADDED KNUCKLES, PALM & THUMB
- CUSTOM HARD-SHELL KNUCKLE
- STRETCH PANELS AT FINGERS
- ULTRA SHORT WRIST CUFF
- UNLINED FINGERS FOR DEXTERITY & GRIP
- PERFORATED HOLES ON FINGERS & FOURCHETTES
- EN 13594: 2015 // LEVEL 1

CE CERTIFICATION

What is it?

CE CERTIFICATIONS

Let's face it, getting riding gear and equipment that will protect you on the road can be complex. There are a wide variety of laws, certifications and rating systems; however, you can ride assured.

However, you can ride assured when you see the CE symbol on your Can-Am gear. These products have gone through significant testing and meet the stringent requirements necessary to earn this certification.

All of our CE certified items have passed the following tests: impact abrasion resistance, tear strength, seam strength, wash testing, and chemical testing.

So when you see the CE mark on your Can-Am gear, you can ride with peace of mind knowing your equipment has you covered.

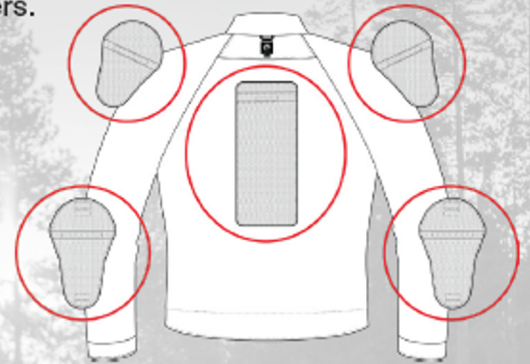


SAS-TEC PROTECTORS

What is our offering?

SAS-TEC PROTECTORS

Our riding jackets include removable SAS-TEC protectors in the shoulders and elbows, as well as a zone for a back protector (sold separately). SAS-TEC protectors are low-profile, modular, and most importantly, highly effective shock absorbers.



can-am

SPORTSWEAR COLLECTION

MEN'S SIGNATURE LINEUP

NEW**MEN'S SIGNATURE**● DELETE
● COPY**288112_NEW**
Unisex Can-Am Adjustable Signature Cap

Black (90) Grey (09) Burgundy (35) Army Green (77)

288115_NEW
Men's Signature Tee

Black (90) Army Green (77) Wine (32) Heather Grey (27)

298068_REDO
Men's Can-Am Signature Crewneck

Black (90)

288047_REDO
Men's Can-Am Signature Pullover Hoodie

Black (90)

288117_NEW
Men's Signature Long Sleeve

Black (90) Army Green (77)

288116_NEW
Men's DNA T-Shirt

Navy (89) Black (90)

288118_NEW
Men's Can-Am DNA Long Sleeve

Black (90)

MEN'S TOPS LINEUP

MEN'S T-SHIRTS

● DEplete
● KEEP

288121_NEW
Men's Can-Am Rodway Tee



Army Green (77) Wine (32)

288049_NEW
Men's Can-Am Cruiser Tee



Black (90) Army Green (77)

NEW

288024_NEW
Men's Racing Tee



White (01) Navy (89)

454945_DEplete
Men's Diametrix T-Shirt



Black (90) Indigo Blue (82)

454946_DEplete
Men's All Ride T-Shirt



Black (90) Charcoal Grey (07)

454943_DEplete
Men's Wolves Long Sleeve



Black (90) Charcoal Grey (07)

MEN'S CASUALWEAR

288064_KEEP
Men's Performance Long Sleeve



Black (90) Indigo Blue (82)

454726_DEplete
Men's Zip-Up Ponte Hoodie



Black (90) ● Indigo Blue (82)

WOMEN'S LINEUP

WOMEN'S

NEW

288119_NEW
Women's Signature Tee



Black (90) Navy (89) Heather Grey (27)

288250_REDO
Women's Can-Am Signature Crewneck



Black (90)

288249_REDO
Women's Signature Pullover Hoodie



Black (90)

289026_NEW
Women's Can-Am Rally Tee - Boxy Fit



Black (90) Heather Grey (27)

288120_NEW
Women's Racing Tee - Boxy Fit



Black (90) Heather Grey (27)

454954_DEPLETE
Women's Street Division T-Shirt



Black (90) Army Green (77)

454955_DEPLETE
Women's Graphic WMN T-Shirt



Black (90) Heather Charcoal (29)

REDO

289021_REDO
Women's Performance Long Sleeve



Black (90) Purple (40)

454725_DEPLETE
Women's Pullover Ponte Hoodie



Black (90) Burgundy (35)

454723/454724_DEPLETE
Ponte Legging



Black (90)

● DEPLETE
● KEEP
● INCLUDE (N/A)

HEADWEAR & RACING LINEUP

HEADWEAR

NEW

● DELETE
● KEEP

289080_NEW
Unisex Can-Am Racing Cap



Black (90)



Navy (89)

289114_NEW
Unisex Can-Am DNA Flat Cap



Black (90)



Grey (09)

289113_NEW
Unisex Can-Am Flat Mesh Cap



Black (90)



Sand (03)

454959_DELETE
Infinite Motion Can-Am Curved Cap



Black (90)



Indigo Blue (82)



Charcoal Grey (07)

454961_DELETE
Wolves Among Sheep Flat Cap



Black (90)

NEW

MEN'S RACING

454696_DELETE
Atmos Moto Jersey



Black (90)



Green (70)

447941_KEEP
Neck Gaitor



Black (90)

can-am[®]



CLUB  **2025**